

IDENTIFY MY ALARM SYSTEM



The Smartlink Interactive Gateway Module (IGM) connects to a Honeywell Vista™; DSC® PowerSeries™; GE® Interlogix Simon XT, XTi®, Caddx NX®, Concord®; Napco™ Gemini™ P816 Paradox™ MG 5050 and Texecom 412, 816 or 832 panels.

In order to establish your alarm system's compatibility with Smartlink:

1. Check your keypad for the brand name.
2. Check the control panel box to verify brand name and series type.
3. Check the alarm system pc board to verify the model number.



Caddx (also known as GE) NX Series:

Any Caddx or GE NX series panel is compatible.

Caddx/GE keypads



Caddx/GE control panels



Caddx/GE PC board



Look out for the model indication on the PC board.

Any sticker indicating NX-4, NX-6 or NX8 is compatible.



DSC Power Series:

Any DSC Power series panel is compatible.

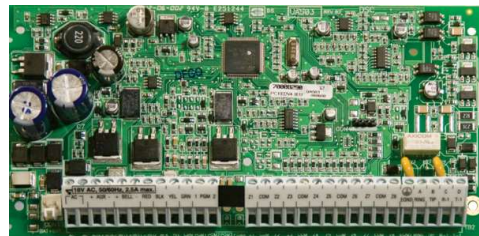
DSC keypads



DSC control panel



DSC PC board



Look out for the model indication on the PC board.

Any sticker indicating PC1808, PC1832 or PC1864, PC5010 (Power 832), PC1616, PC1555 (Power 632), PC5015 (Power 832) or PC 5020 is compatible.



Paradox Magellan MG 5050

Only the Paradox (Magellan) MG5050 panel is compatible.

Paradox
keypads



Paradox
control
panel



Paradox
PC board



Look out for the model indication on the PC board.
Any pc board imprint indicating MG-5050 is compatible.



Texecom Premier Series

Only Texecom Premier 412, 816 or 832 panels are compatible.

Texecom keypads



Texecom control panel



Texecom pc board



Look out for the model indication on the PC board.

Any sticker indicating 412, 816 or 832 is compatible.



Napco Gemini Series

Only Napco Gemini P816 panels are compatible.

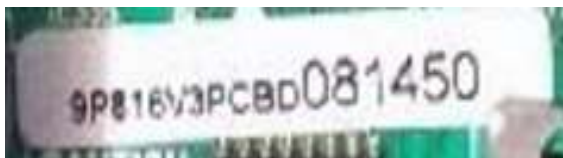
Napco keypads



Napco control panel



Napco PC board



Look out for the model indication on the PC board.
Any sticker indicating P816 is compatible.